

ALLEN GWYNNESTM

END-SUCTION PUMPS

AGP SERIES
Solid Handling Pump



001

STANDARD FEATURES

Spare parts stocking is cut to minimum through high interchangeability of manufactured components. The standard casing mounted arrangement feature " BACK PULL-OUT " , the End shaft diameter are design to fit the taper lock Pully. An Alternative bearing bracket mounted arrangement can be supplied to suit various discharge position.

Casing

High efficiency volute with self-venting vertical centre line discharge. The impeller and casing is equal at all the point. This kind of design is help to reduce turbulence, cavitation. This design can benefit casing life is greatly extended especially in abrasive service.

Impeller

Semi-open impeller is a compromise between an open and an enclosed impeller. It incorporates a single shroud, usually located on the back of the impeller. Semi-open impeller operates more efficiently than an enclosed impeller because of lower disc friction and tighter axial clearances .This impeller is suitable for handling solid application.

Shaft

Large diameter shaft design to take full load stresses with minimum deflection. Fully machined and ground section where fine finishing and dimensional tolerance are critical. The shaft end design is benefit for taper lock pully.

Bearing

Two identical bearings sized for long running life under maximum load operation. Grease lubrication is standard.

Bearing Housing

Sturdy design to ensure rigidity and vibration-free operation.

PUMP NAME PLATE INFORMATION:

ALLEN GWYNNES NIMBUS PUMP

PUMP SIZE

SERIAL NO. WM

BEARING END FLOAT MM

IMPELLER SIZE MM

PUMP SIZE

a

b

c

Model range

A : Allen
G : Gwynnes
P : Process Pumps

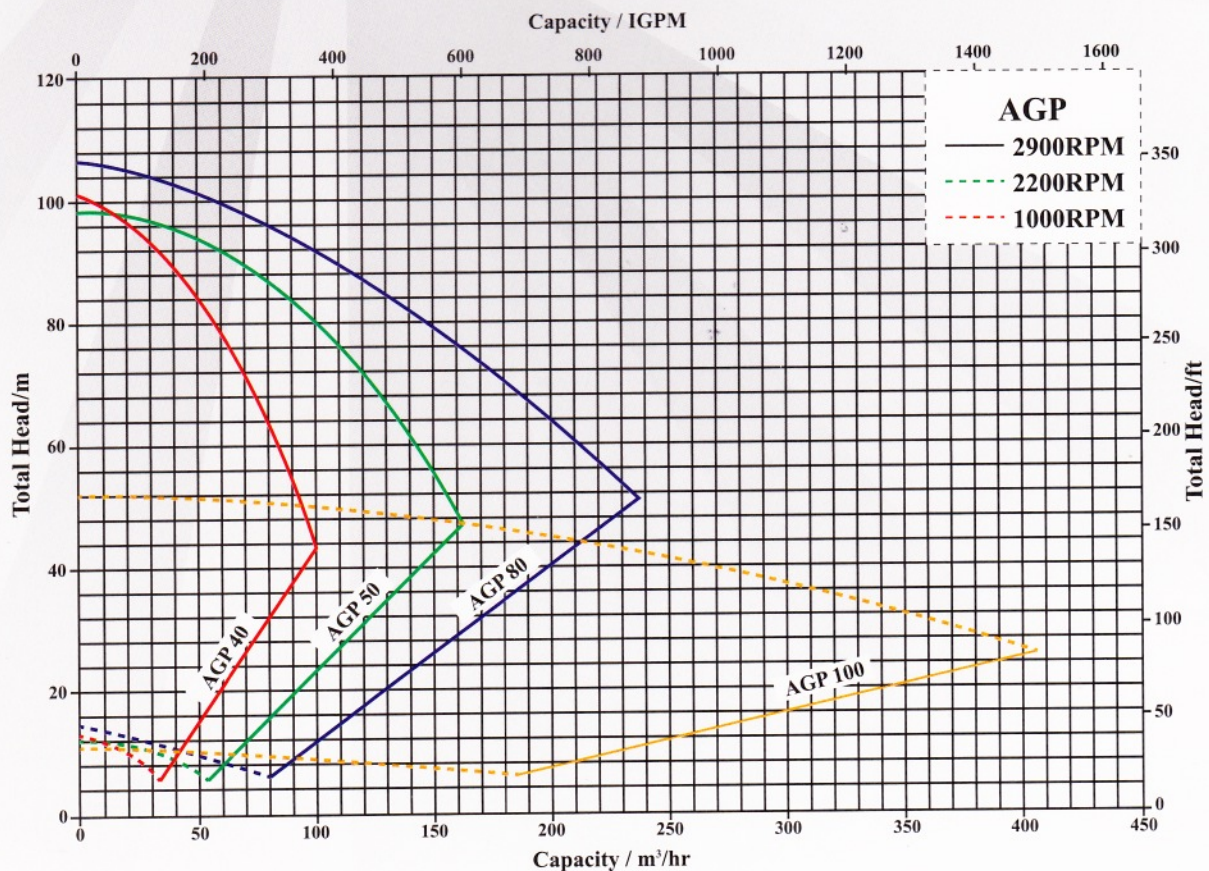
Model Size

40mm: Nominal discharge diameter 40
50mm: Nominal discharge diameter 50
80mm: Nominal discharge diameter 80
100mm: Nominal discharge diameter 100

Market

P : Palm oil
G : General industrial
A : Agriculture and other

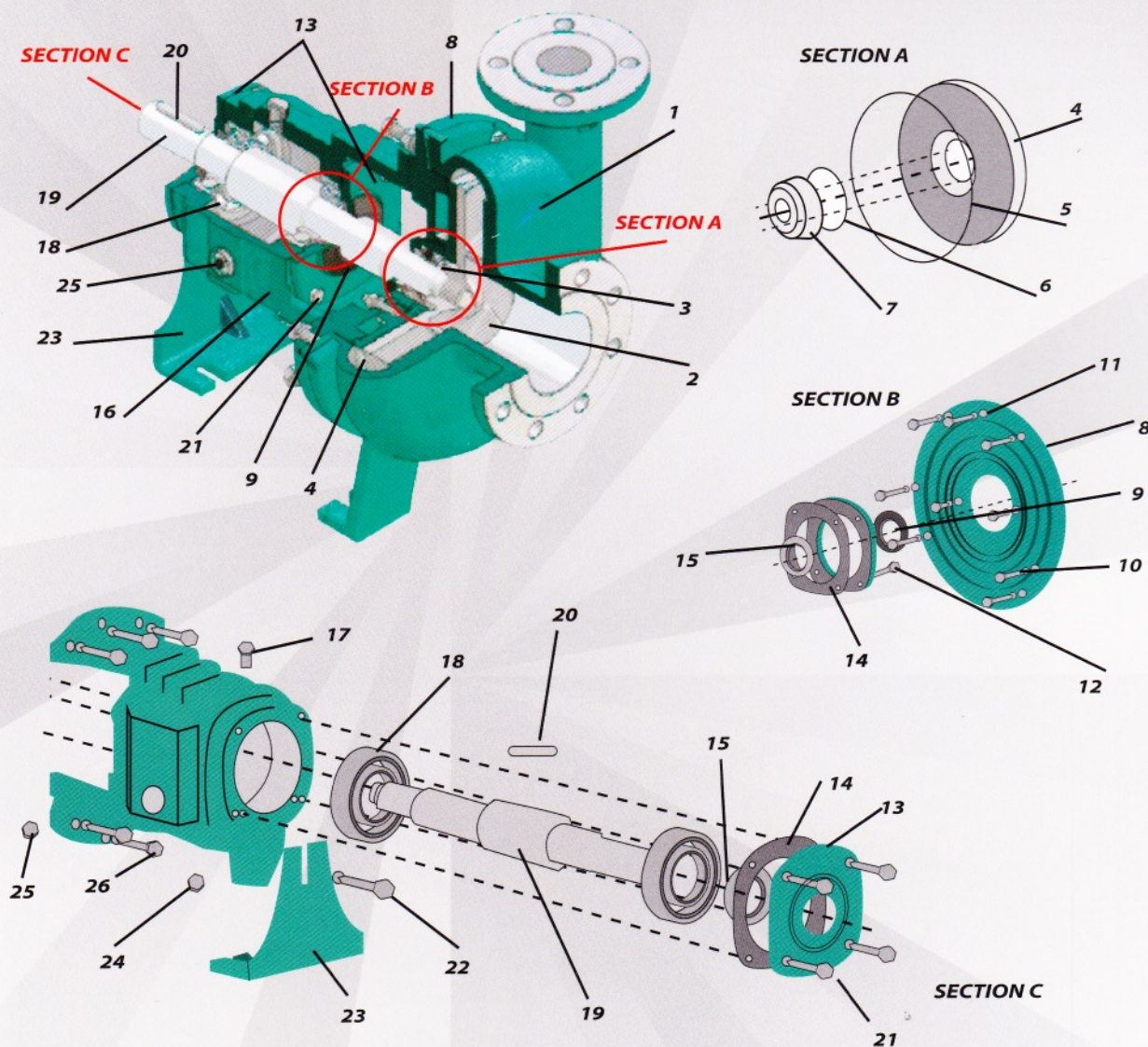
RANGE CHART



Remark: AGP 40 to AGP 80 (semi open impeller)
AGP 100 (open impeller)

MECHANICAL SEAL TYPE

PART LIST



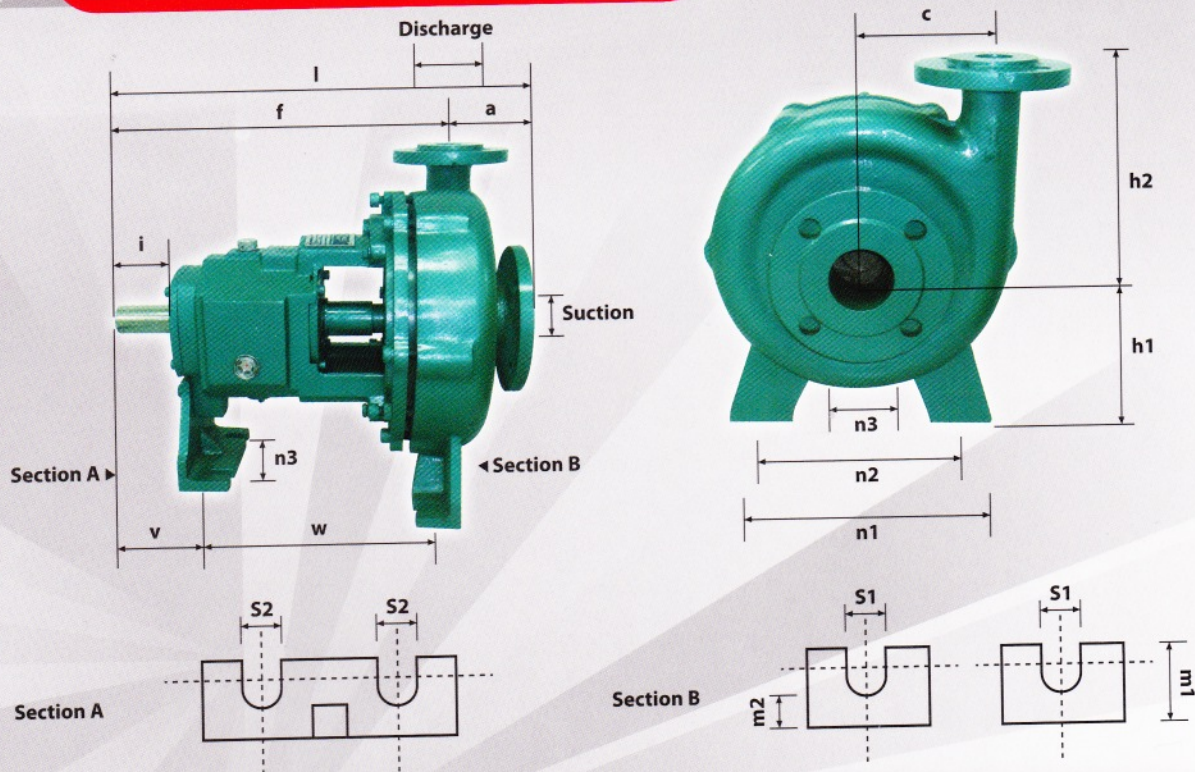
Item No.	Description	Standard Material	Item No.	Description	Standard Material
1	Casing	CI/DI/CA15/SS/SS316	13	Bearing End Cover	CI
2	Semi-open Impeller	CI/DI/CA15/SS/SS316	14	Bearing End Cover Gasket	AS
3	Mechanical Seal	CARBON VS CERAMIC/SIC VS SIC	15	Oil Seal	SR
4	Ms Cover	CI/DI/CA15/SS/SS316	16	Bearing Bracket	CI
5	O-ring Ms Cover	SR	17	Oil Cover	ALUMINIUM ALLOY
6	O-ring Chamber	SR	18	Bearing	STEEL
7	Chamber	SS	19	Shalf	SS 304/SS 316
8	Back Cover	CI/DI/CA15/SS/SS316	20	Key Shaft	SS 304
9	V-ring	SR	21	Screw Bearing End Cover	STEEL
10	Srew Back Cover	STEEL	22	Screw Bracket Reinforcement	STEEL
11	Back Cover Nut	STEEL	23	Bracket Reinforcement	CI
12	Screw End Cover	STEEL	24	Cover Bearing Bracket	GS
			25	Oil Gauge	PLASTIC

Remark:
 SS-Stainless steel
 CI-Cast Iron
 SR-Synthetic Rubber

AS-Asbestos Sheet
 GS-Galvenise Steel
 DI-Ductile Iron

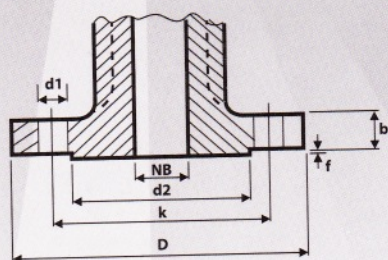
ALLEN GWYNNE'S

PUMPS MOUNTING



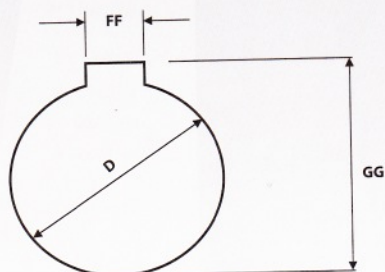
Dimensions in mm																				Shaft End
PUMP MODEL	Flanges (mm)		Pump Dimensions						Foot Dimensions											l
	Suction	Discharge	a	f	l	h1	h2	c	b	m1	m2	n1	n2	n3	s1	s2	v	w		
AGP 40	65	40	85	430	515	210	203	135	75	55	35	300	245	110	18	14	130	265	80	
AGP 50	80	50	115	430	545		215	123												
AGP 80	100	80	115	440	555		242	130												
AGP 100	125	100	125	445	570		262	148												

FLANGES DETAILS



NOMINAL BORE	FLANGE		RAISED FACE		BOLTING	DRILLING		
NB	D	b	d2	f		NO	d1	k
40	150	18	88	3	M16	4	18	110
50	165	20	102	3	M16	4	18	125
65	185	20	122	3	M16	4	18	145
80	200	22	138	3	M16	8	18	160
100	220	24	158	3	M16	8	18	180
125	250	26	188	3	M16	8	18	210

COUPLING BORE DETAILS



D (H7)	GG	FF
0 42 + 0.025	0 45.3 + 0.2	12 ± 0.0215



**ALLEN TM
GWYNNES**

www.allengwynnes.com.my

Authorised Dealer :